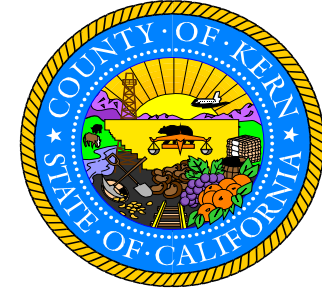




Construction without building permits.
KC Building Code Violation §17.08.03



Illegal dumping.
KC Solid Waste Code Violation § 8.28.080



CODE COMPLIANCE IN THE COUNTY OF KERN



Blocking public access.
KC Zoning Code Violation § 19.02.060



Combustible material stored around the dwelling.
KC Solid Waste Code Violation § 8.28.110



Illegal signs.
KC Zoning Code Violation § 19.02.060



Surfacing sewage.
KC Housing Code Violation § 1001.2



Continuous yard sale.
KC Zoning Code Violation § 19.02.060

**County of Kern
Code Compliance**

**2700 "M" Street
Bakersfield, CA 93301**

**Phone: (661) 862-8603
1(800) 552-KERN (Option 7)
Fax: (661) 862-5101**

**A Partnership to Promote
Health and Safety and Maintain
Community Standards**



Mobile home(s) being stored.
KC Zoning Code Violation § 19.02.060

**E-mail:
CodeCompliance@kerncounty.com**

What is our mission?

The mission of the Code Compliance Division is to work in partnership with the people of Kern County to promote health and safety and to maintain community standards. This will be accomplished by:

1. Administering a fair and unbiased compliance program to correct violations of property conditions and land use requirements.
2. Providing a uniform, consistent yet flexible procedure to insure that all citizens of Kern County are equally represented.
3. Minimizing the necessity for legal action by allowing ample opportunity for voluntary compliance and correction.
4. Responding promptly to complaints regarding structures and/or conditions which present a health or safety hazard to the public.

What codes do we enforce?

The Code Compliance Division enforces regulations related to the following:



Defective floor supports, rafters, and eaves. Defective exterior/interior walls, likely to collapse.
KC Housing Code Violation § 1001.3



Storage of recreational vehicles.
KC Zoning Code Violation § 19.02.060



Structure has become an attractive nuisance to children and/or a harbor to vagrants.
KC Uniform Code for Abatement of Dangerous Buildings § 202



Grading without permits.
KC Grading Code Violations § 17.28.040



Semi truck parking in a residential district.
KC Zoning Code Violation § 19.02.060



Occupied R.V.
KC Zoning Code Violation § 19.02.060



Open and/or unsecured structure(s).
KC Housing Code Violation § 1001.4



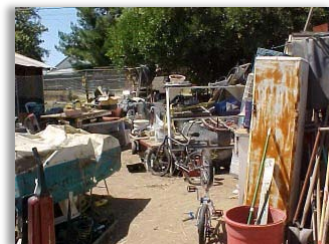
Lumber, trash, debris, fences hazardous to minors.
KC Solid Waste Code Violation § 8.28.110



Abandoned and/or inoperable vehicles.
KC Abandoned Vehicle Code Violation § 10.28.040



Broken Windows.
KC Housing Code Violation § 1001.8



Excessive storage of non-permitted, miscellaneous items.
KC Solid Waste Code Violation § 8.28.110



Operation of a business without land use approval.
KC Zoning Code Violation § 19.02.060